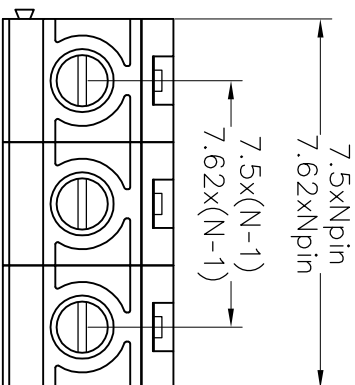
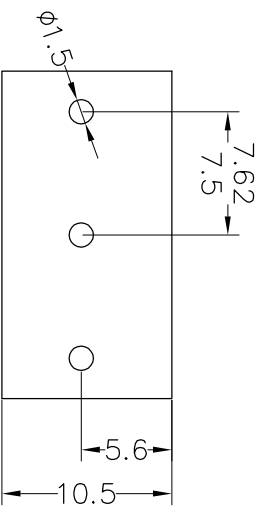


## SPECIFICATIONS

Rated(额定参数): 300V,20A  
 Dielectric strength(抗电强度): AC2000V/1 Minute  
 Insulation Resistance(绝缘电阻):1000MΩ Min  
 Contact Resistance(接触电阻):20mΩ Max  
 Screw Torque(扭矩): 0.5Nm (4.4lb.in)  
 Wire Range(线径):1.2~26AWG  
 Strip length(剥线长度):6~7mm  
 Temp. range(操作温度):-40℃~+105℃  
 MAX Soldering(瞬时温度):+250℃,5s



Recommended P.C.B Layout(Top Side)  
 (PCB BOARD TOLERANCE±0.05)



Housing Material(塑件): PA66 (UL94 V-0)  
 Contact(端子): Brass, Tin plating(黄铜镀锡)  
 Clamp(方块): Brass/Steel(铜/铁), Ni plating(镍)  
 Screw(螺丝): M3.0, Steel, Zinc plating(钢,镀锌)

	PITCH RANGE		NOMINAL DIMENSION RANGE				
	IN MM		IN MM				
TO 6	OVER 10	TO 10	OVER 30	TO 60	OVER 100	TO 100	OVER 150
TO 10	OVER 24	TO 24	OVER 60	TO 100	OVER 150	TO 150	OVER 150
±0.10	±0.15	±0.25	±0.30	±0.30	±0.50	±0.70	±1.00

## Ordering Information

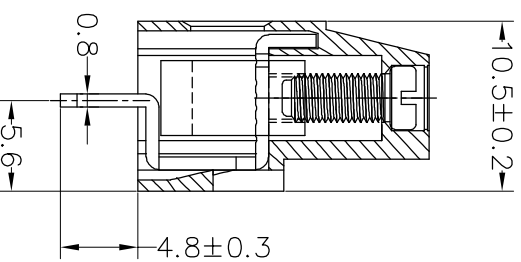
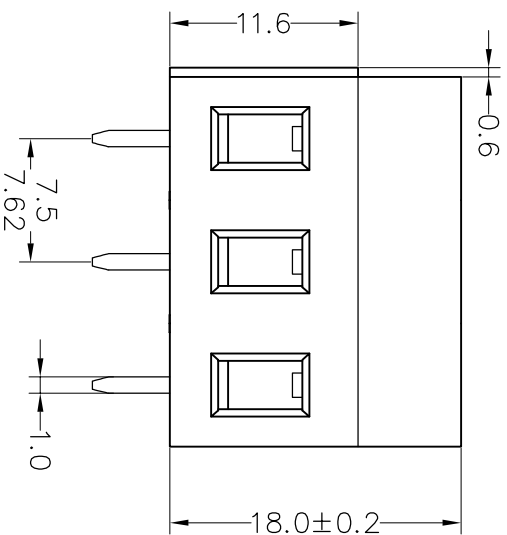
JL 129-XXX XX X X 1

Pitch  
 750=7.5PH  
 762=7.62PH

No. of pins  
 2P,3P,4P~12P

Housing Color  
 B=Black  
 G=Green  
 U=Blue  
 R=Red  
 W=White  
 Y=Yellow  
 O=Orange  
 E=Grey

Packing  
 O=Pe bag  
 T=Tube  
 A=Troy



REV	DATE	MODIFICATION DESCRIPTION	CHANGE	OPERATION		DRAW	yiyusheng	19.07.04	SCALE		FIT	PART NO.		TITLE:
				XX	±0.30				UNIT	mm		PROJ.	φ	
A0	2019.07.04	NEW DRAWING		X:XX	±0.20	CHECK			A4		1/1			
1				Angle	±3°	APPROVE								

**JILIN<sup>®</sup>** 深圳市锦凌电子有限公司  
 SHENZHEN JINLING ELECTRONIC CO.,LTD  
 Tel: 86-755-2997-5806/5802 Fax: 86-755-2997-5992